

S-SB-0002-13

January 16, 2013

# Moisture in Rear Combination Light / Water Intrusion Into Vehicle

**Service Category** Vehicle Exterior

**Section** Lighting (ext)

**Market** USA

Scion Supports  
 ASE Certification 

## Applicability

YEAR(S)	MODEL(S)	ADDITIONAL INFORMATION
2013	FR-S	

## Introduction

Some 2013 model year FR-S vehicles may exhibit one or both of the following conditions:

- Water intrusion into the rear combination light housing resulting in water droplets forming on the inside of the housing
- Water intrusion into the rear of the vehicle resulting in wet conditions in the cargo area adjacent to the rear combination lights

Use the following procedure to address these conditions.

## Production Change Information

This bulletin applies to vehicles produced **BEFORE** the Production Change Effective VIN shown below.

MODEL	PRODUCTION CHANGE EFFECTIVE VIN
FR-S	JF1ZNAA1#D#703318

## Parts Information

PREVIOUS PART NUMBER	CURRENT PART NUMBER	PART NAME	QTY
SU003-02533	Same	Lens & Body, Rear Combination Lamp, LH	1
SU003-02532	Same	Lens & Body, Rear Combination Lamp, RH	1
SU003-04315	Same	Gasket, Rear Combination Lamp, LH	1
SU003-02586	Same	Gasket, Rear Combination Lamp, RH	1

## Moisture in Rear Combination Light / Water Intrusion Into Vehicle

### Required Tools & Equipment

SPECIAL SERVICE TOOLS (SST)	PART NUMBER	QTY
Plastic Pry Tool Set*	<a href="#">00002-06000-01</a>	1

\* Essential SST.

**NOTE**

Additional SSTs may be ordered by calling 1-800-933-8335.

### Warranty Information

OP CODE	DESCRIPTION	TIME	OFFP	T1	T2
BD1244	R & R Combination Light and Inspect for Cause of Condition (One Side)	0.5	SU003-02532 SU003-02533	64	*
Combo A	Opposite Side	0.5			
Combo B	Scrape Off Misplaced Body Sealer (One Side)	0.2			
Combo C	Opposite Side	0.2			
Combo D	Straighten Sheet Metal around Mounting Holes in Body (One Side)	0.2			
Combo E	Opposite Side	0.2			

\* = Dealer to specify.

**APPLICABLE WARRANTY**

- This repair is covered under the Toyota Basic Warranty. This warranty is in effect for 36 months or 36,000 miles, whichever occurs first, from the vehicle's in-service date.
- Warranty application is limited to occurrence of the specified condition described in this bulletin.

## Moisture in Rear Combination Light / Water Intrusion Into Vehicle

### Inspection Procedure

1. Prior to making any repairs or replacing parts, locate the source of water entry.
2. See Figure 1 for an example of moisture inside the Rear Combination Light.

Figure 1.



<b>1</b>	<b>Interior Moisture</b>
----------	--------------------------

3. Remove the interior trim panel covering the rear combination lights.

Refer to the Technical Information System (TIS), applicable model and model year Repair Manual:

- 2013 FR-S:  
*Vehicle Exterior – Lighting (ext) – “Lighting (Ext): Rear Combination Light Assembly: [Removal](#)”*

4. Spray water on the vehicle, especially around the perimeter of the light housing.

Figure 2.



<b>1</b>	<b>Spray Location</b>
----------	-----------------------

5. From inside the vehicle, note any locations where water is leaking into the vehicle.

## Moisture in Rear Combination Light / Water Intrusion Into Vehicle

### Inspection Procedure (Continued)

6. Remove one or both lights that show evidence of moisture intrusion.
7. Inspect the back side of the combination lights for evidence of plastic cracking around the mounting studs. If cracking is present, replace the housing and the gasket.

Figure 3.



**NOTE**

The sealing gasket is a “ONE USE ONLY” type gasket and **MUST** be replaced every time a combination light housing is removed from the vehicle.

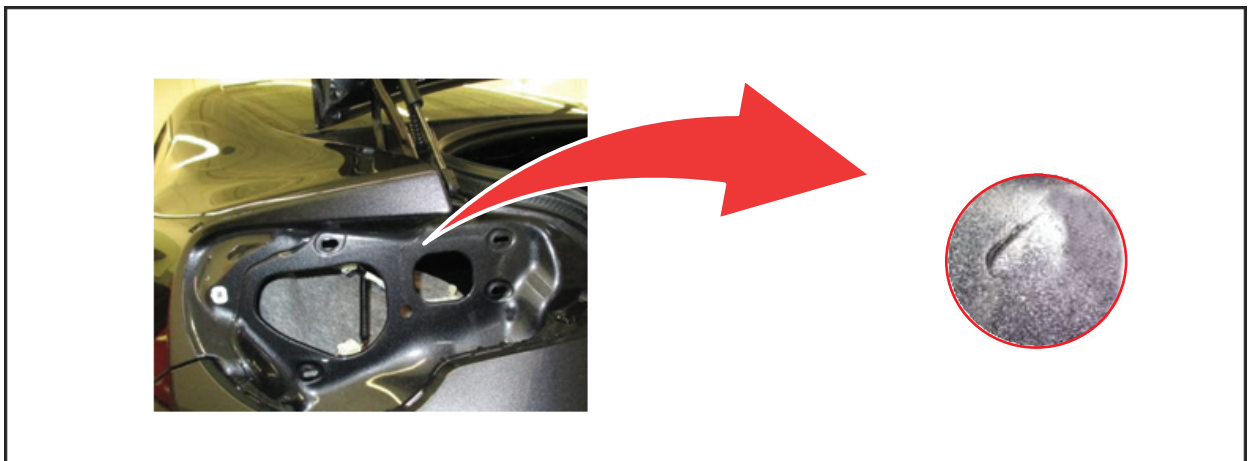
### Repair Procedure

1. Inspect the sheet metal body panel adjacent to the back side of the light housing for evidence of misplaced body seam sealer.

**NOTE**

Remove any misplaced seam sealer with the sharp end of the plastic pry tool (SST# 00002-06002-01) being careful **NOT** to damage the painted body surface. If bare metal should appear during the sealer removal process, use touch-up paint to cover any bare metal areas before proceeding.

Figure 4.



## Moisture in Rear Combination Light / Water Intrusion Into Vehicle

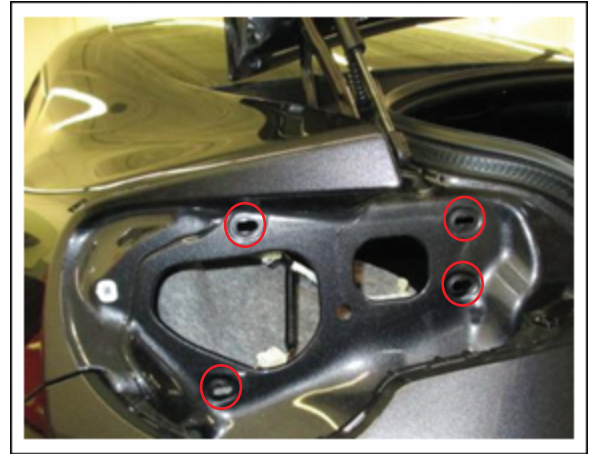
### Repair Procedure (Continued)

2. Inspect the body sheet metal for evidence of deformed (cone shape) sheet metal around the 4 through-holes in the body.

**NOTE**

Use a Body Hammer and Body Dolly to flatten the sheet metal around the 4 through-holes in the body (see circled areas for through-hole locations). Use touch-up paint on any bare metal areas.

Figure 5.



3. Inspect the rear combination light sealing gasket for evidence of misplacement.

**NOTE**

A misplaced gasket may allow water to enter the combination light housing or possibly the interior of the vehicle.

Figure 6.



## Moisture in Rear Combination Light / Water Intrusion Into Vehicle

---

### Repair Procedure (Continued)

4. Replace a rear combination light ONLY if it is damaged.

#### NOTE

- If the cause of the water leak was misplaced seam sealer or a misplaced sealing gasket, carefully inspect the combination light housing for evidence of damage and if no damage is present, do NOT replace the housing, replace ONLY the sealing gasket.
- The sealing gasket is a “ONE USE ONLY” type gasket and **MUST** be replaced every time a combination light housing is removed from the vehicle.

Figure 7.



5. Replace combination light by removing the components from the combination light housing.

Refer to TIS, applicable model and model year Repair Manual:

- 2013 FR-S:  
*Vehicle Exterior – Lighting (ext) – “Lighting (Ext): Rear Combination Light Assembly: [Disassembly](#)”*

6. Install wiring components from the old combination light housing into the new light housing.

Refer to TIS, applicable model and model year Repair Manual:

- 2013 FR-S:  
*Vehicle Exterior – Lighting (ext) – “Lighting (Ext): Rear Combination Light Assembly: [Reassembly / Installation](#)”*

#### NOTE

Reinstall the interior trim panels **AFTER** the exterior water test is completed.

## Moisture in Rear Combination Light / Water Intrusion Into Vehicle

---

### Repair Procedure (Continued)

7. Perform a final water test confirmation.
  - A. Spray water on the vehicle, especially around the perimeter of the light housings.
  - B. From inside the vehicle, confirm there is no water is leaking into the vehicle.

Figure 8.



8. Reinstall the interior trim panels and road test the vehicle to confirm that there are no squeaks and/or rattles from the interior trim panels.